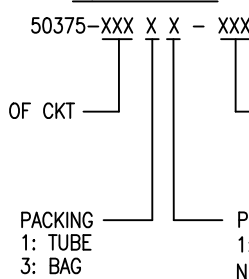




NOTES:

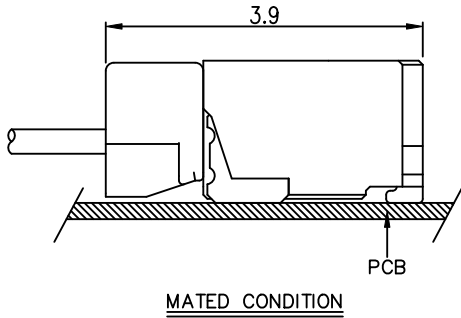
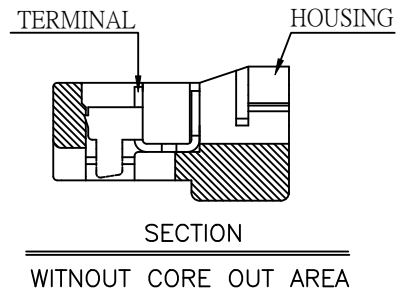
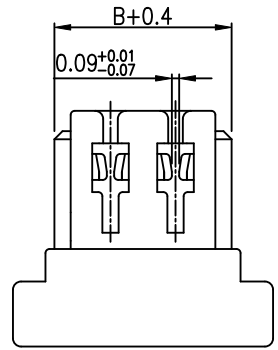
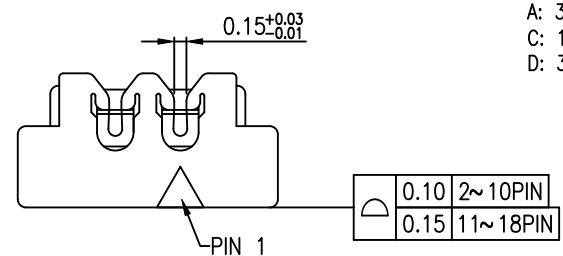
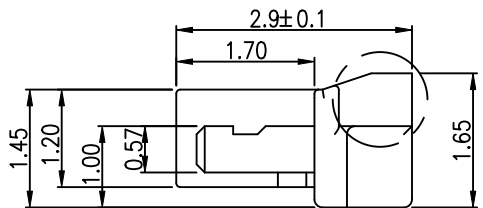
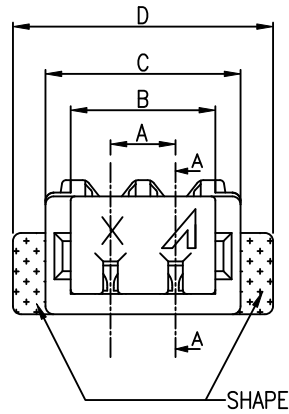
1. MATERIAL:
 - 1.1 HOUSING: High Temperature Thermal Plastic .
 - 1.2 CONTACT: COPPER ALLOY.
2. FINISH:
 - 1: Gold Flash(1u" MIN.)
 - N: 80~120u" Matt Tin(Lead Free)
 - A:3u" MIN GOLD ON CONTACT
 - C:15u" MIN GOLD ON CONTACT
 - D:30u" MIN GOLD ON CONTACT
3. Applicable wire:
 - AWG #32/7C, UL1867/UL10064, OD:0.38±0.02mm.
 - WIRE RETENTION FORCE PLS REFER TO SPEC
4. SPEC. PLS. REFER TO PS-50208-xxxxx-xxx
5. PART NUMBER

P/N LEGEND

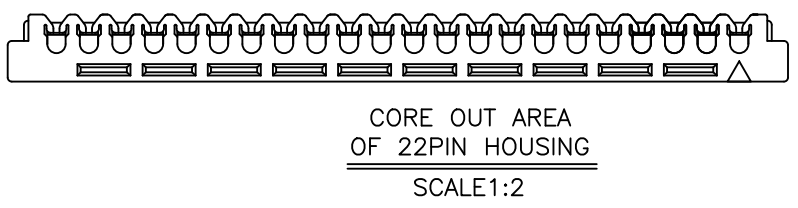
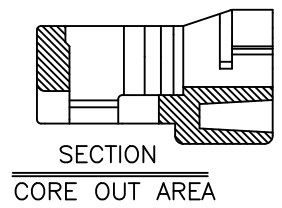


XXX	SHAPE	LOGO	MATERIAL&COLOR	Halogen Free
001	NONE	ACES	PBT & BLACK	HF
002	YES	ACES	PBT & BLACK	HF
006	NONE	ACES	LCP & BLACK	HF
007	NONE	ACES	Nylon 46 & BLACK	HF
008	NONE	ACES	LCP & WHITE	HF
009	YES	ACES	Nylon 46 & BLACK	HF
010	YES	ACES	Nylon 46 & WHITE	HF
011	YES	ACES	PA4T & BLACK	HF
012	NONE	ACES	Nylon 46 & WHITE	HF

- Plating
 1: Gold Flash(1u" MIN.)
 N: 80~120u" Matt Tin(Lead Free)
 A: 3u" MIN. Gold
 C: 15u" MIN. Gold
 D: 30u" MIN. Gold



CKT.	Dim A	Dim B	Dim C	Dim D
2	0.80	1.78	2.40	3.20
3	1.60	2.58	3.20	4.00
4	2.40	3.38	4.00	4.80
5	3.20	4.18	4.80	5.60
6	4.00	4.98	5.60	6.40
7	4.80	5.78	6.40	7.20
8	5.60	6.58	7.20	8.00
9	6.40	7.38	8.00	8.80
10	7.20	8.18	8.80	9.60
11	8.00	8.98	9.60	10.40
12	8.80	9.78	10.40	11.20
13	9.60	10.58	11.20	12.00
14	10.40	11.38	12.00	12.80
15	11.20	12.18	12.80	13.60
16	12.00	12.98	13.60	14.40
17	12.80	13.78	14.40	15.20
18	13.60	14.58	15.20	16.00



QUALITY SYMBOLS MAJOR Ⓢ CRITICAL Ⓢ	DRAWN BY Zhang,xuqin	DATE 23/02/17	
	CHECKED BY XUZHONG	DATE 23/02/17	
GENERAL TOLERANCES (UNLESS SPECIFIED) X. ±0.5 .X ±0.25 .XX ±0.15 .XXX ±0.10 ANGLES ±2°	APPROVED BY XUZHONG	DATE 23/02/17	SIZE A4
	UNITS mm		DWG NO. 50375-XXXXX-XXX
	SCALE 1:1	SHEET NO. 1 OF 1	REV U
			PART NO. SEE NOTES